

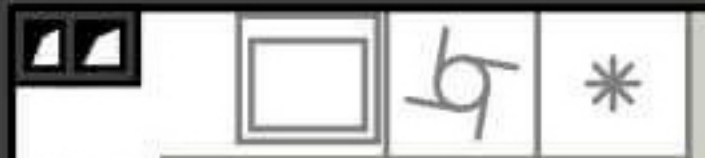


КОРИДОР
3.12 м²

The hallway is centrally located, providing access to the bathroom, kitchen, living area, bedroom, and balcony. It features several doorways and a window.

КИЛЕР
1.99 м²

The kitchen is situated in the upper right corner, containing a sink, a stove, and a window. A door leads from the hallway into the kitchen.



ДНЕВЕН ТРАКТ
18.80 м²

The living area is the largest room, containing a dining table with four chairs, a kitchen area with a stove, and a large window on the left side.



СПАЛНЯ
10.64 м²

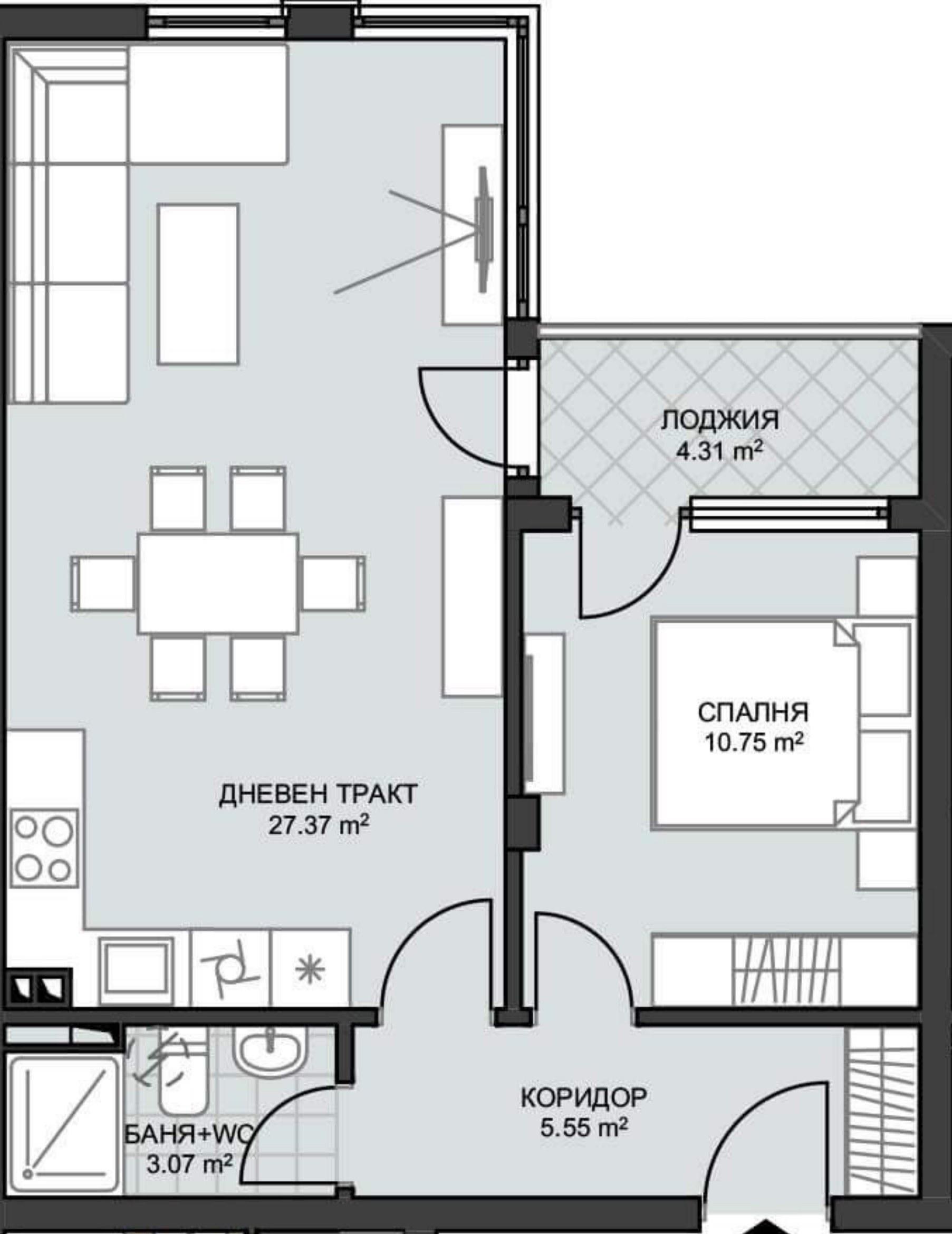
The bedroom is located on the right side of the floor plan, featuring a bed and a window.



ЛОДЖИЯ
3.20 м²

The balcony is located at the bottom right of the floor plan, accessible from the living area.





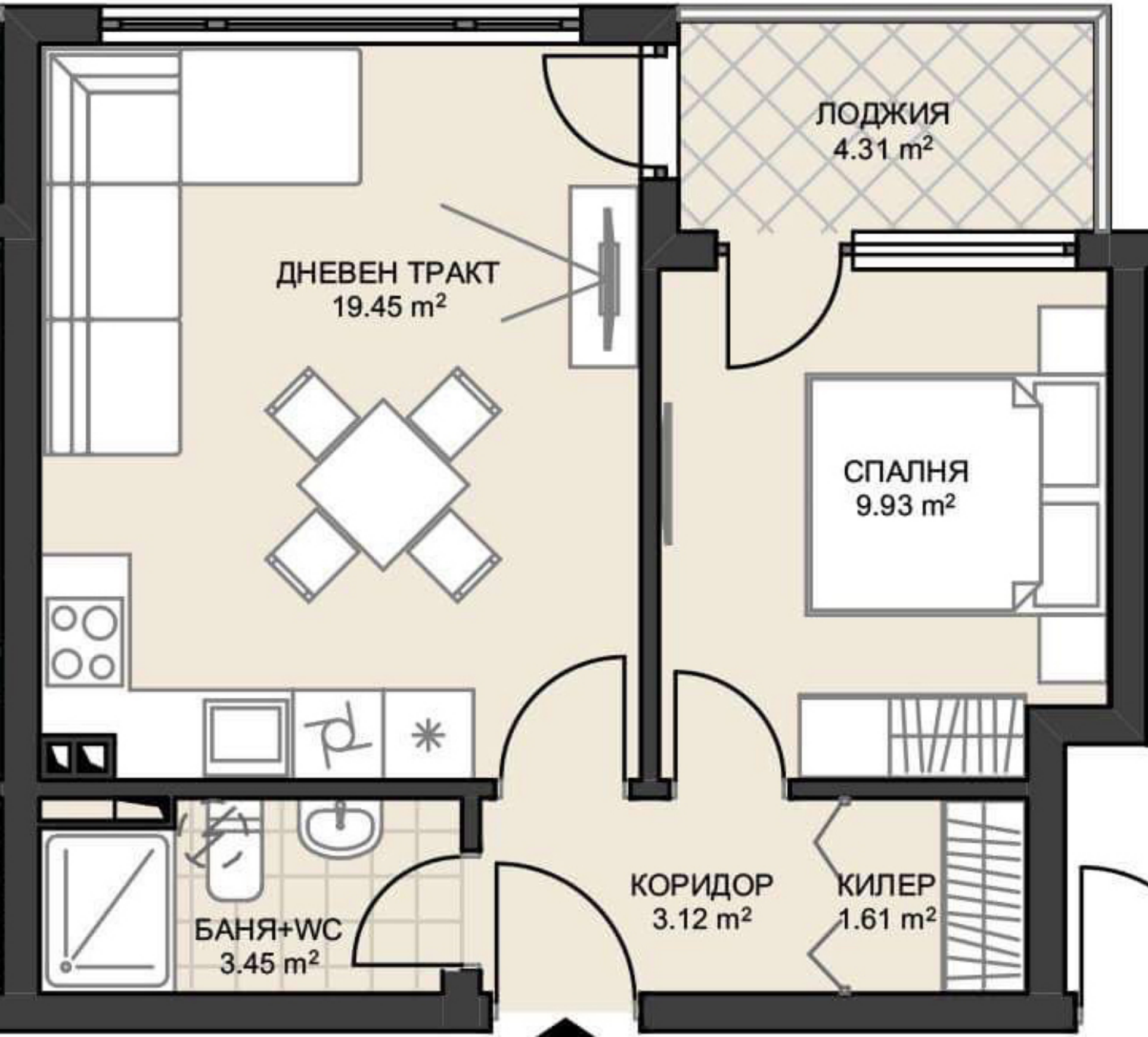
ЛОДЖИЯ
4.31 m²

СПАЛНЯ
10.75 m²

ДНЕВЕН ТРАКТ
27.37 m²

КОРИДОР
5.55 m²

БАНЯ+WC
3.07 m²



ЛОДЖИЯ
4.31 m²

ДНЕВЕН ТРАКТ
19.45 m²

СПАЛНЯ
9.93 m²

БАНЯ+WC
3.45 m²

КОРИДОР
3.12 m²

КИЛЕР
1.61 m²